

**HITACHI**  
Inspire the Next

*Ink Jet Printer*

# *UX Series*

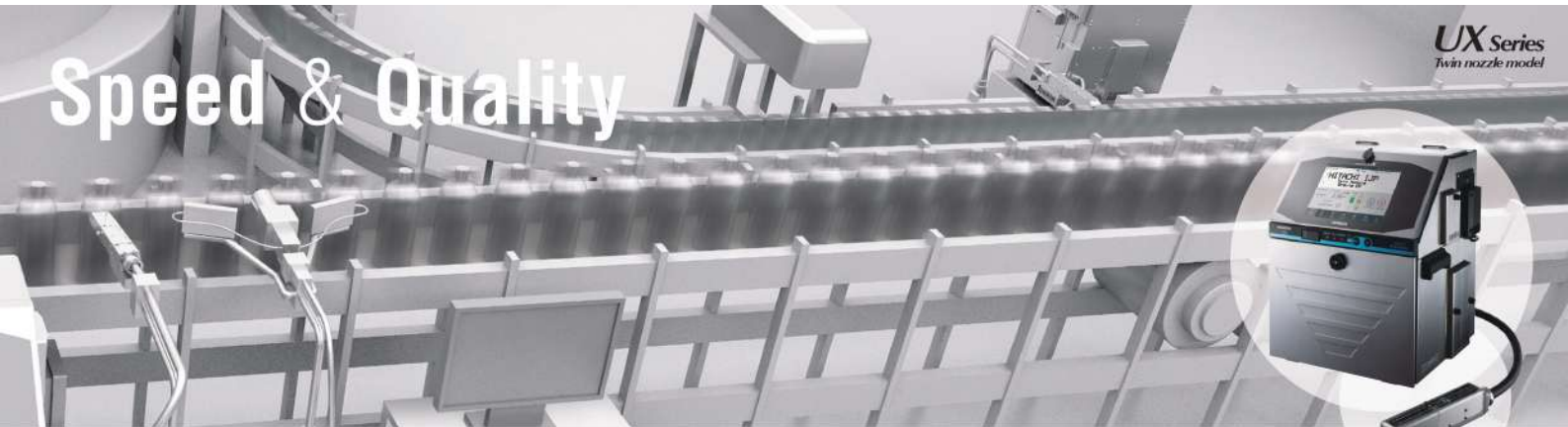
*Twin nozzle model*



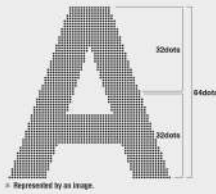
# Twin nozzle

<http://www.hitachi-ies.co.jp/english/products/ijp>

# Speed & Quality



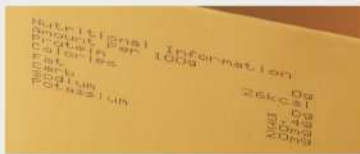
Twin nozzle



\* Represented by an image.

## Flexible 8-Line Print

Our printhead now has the capability of producing 8 lines of text by utilizing two individual nozzles in one, compact design. In addition, by utilizing Hitachi's original "interlaced" print control technique, multiple line messages are printed clearly and legibly, further reducing coding errors due to misprint.



## Versatile 64-Dots

Our innovative design can now produce 64 vertical dots of print resulting in large, bold characters. This makes our twin nozzle printer ideally suited to mark company logos or any other pattern previously unachievable with traditional print heads.



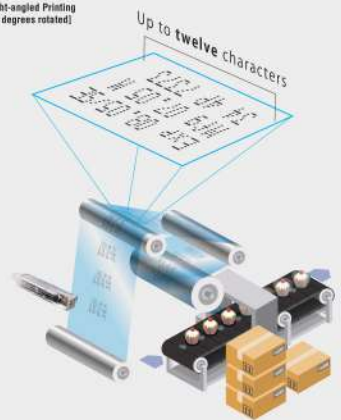
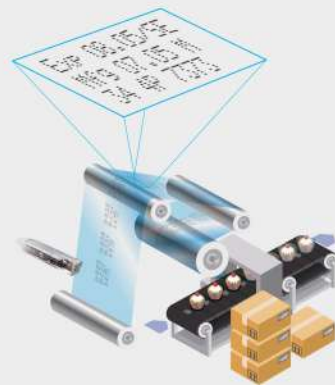
## Right-angled Printing [90 degrees rotated]

Hitachi UX Twin Nozzle model enables to print up to twelve characters at right angles\*\* to the direction of movement with consideration for design or position of printing objects and thus extending the possibility of print contents and meeting various customer's needs.

\*\* Depends on font size.  
\* Represented by an image.

General printing to the direction of movement

Right-angled Printing [90 degrees rotated]



# Speed & Quality

# Usability & Reliability

UX Series  
Twin nozzle model



## Higher print speeds

Having two nozzles on top dramatically increases the speed of multi-line printing. Traditional, single nozzle print heads become taxed very quickly when printing multiple lines of print especially at speed. By sharing the work load between two separate nozzles, this effect is greatly reduced.



Print sample of dish cartons

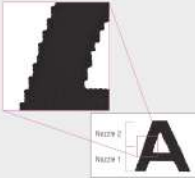
Print sample of PET bottle

Print sample of cans



## Character stitch capability

In case of printing composite characters by two nozzles, the fine-tuning function provides smooth connection of dots at a print position, resulting in the high-quality printing.



## Nozzle-Space Alignment Function\*1

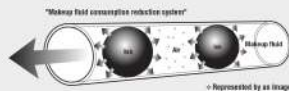
By using this alignment function, our twin nozzle can print the characters without reducing the print speed even when adjusting the space between nozzles and thus can meet various printing needs.

\*1 Print quality will vary before and after this function activation.



## Low fluid consumption

A large factor in determining fluid consumption is the amount of fluid exposure to the outside environment. Hitachi designs their pump system in such a way that minimizes this exposure. Our ink recovery system pulsates ink with best-suited air flow rate while being transported back to the ink tank. This technique reduces the surface area or exposure area of ink, thus reducing the evaporation rate and your bottom line.



## Reduction of makeup fluid consumption

UX-D860W/S



About **30%** reduction\*\*

\*\* As measured in the tests of Hitachi current P20 and R3 models used with 1067K ink at 20°C.



## Easy to Use Interface

The display of our Twin-nozzle model utilizes the same, easy-to-use touch panel incorporated in other UX models. A large 10.4" display, and intuitive parameter illustrations reduce the complexity typically found in traditional small screen printers. In addition, the messages can be easily changed in one screen, with a live WYSIWYG display.



## Low total cost of operation

Hitachi's design facilitates longevity. Each component of our print head can be replaced individually, thus reducing the need to purchase costly sub-assemblies. In addition, our preventative maintenance items are all replaceable individually as well, further reducing the unnecessary replacement of complete ink circuits or complete ink cores.



## Designed for harsh environments

The stainless steel cabinet offers IP55 protection and allows for wash-down and dust protection. The UX Series Twin nozzle's protection is the ideal choice for a variety of printing needs.



Standard print samples (Approx. full scale)

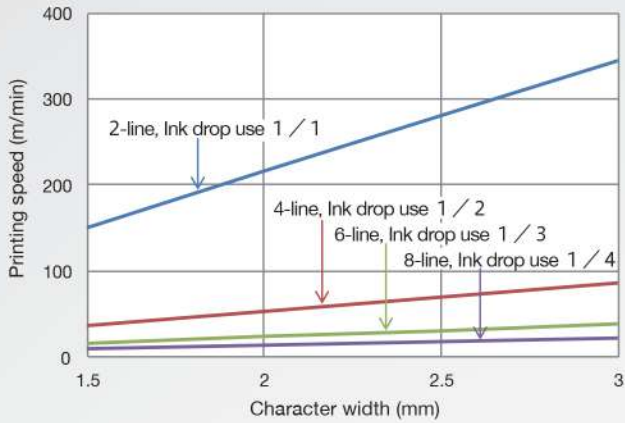
Printing specification	UX-D90W/S	
High-speed printing	200 dpi/1 dot/inch	200 dpi/1 dot/inch
	Nozzle 2	Nozzle 1
2.5-line printing	Face 7490	Nozzle 2
	Face 7490	Nozzle 1
	Face 7490	Nozzle 2
	Face 7490	Nozzle 1
Multi-line printing (4-line, 8-line)	Face 748	Nozzle 2 (China English)
	Face 748	Nozzle 1 (China Arabic)
	Face 747	Nozzle 2
Dot mixture	Face 747 (A3)	Nozzle 2
	Face 747 (A3)	Nozzle 1
Logos**	64 dpi	Nozzle 2
	64 dpi	Nozzle 1

\*\* In case of printing the logos, please make sure the image quality is acceptable to the destination of the corporation.

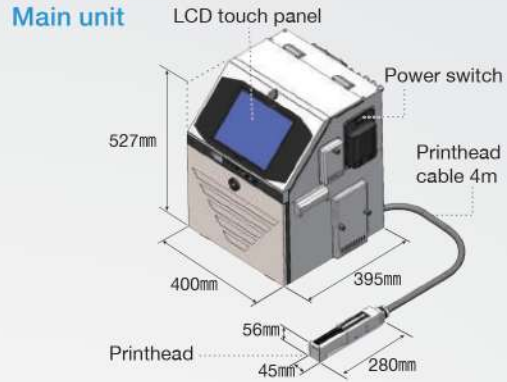
Printing specification	UX-D90W/S	
Bold characters	Face 747	Nozzle 2
	Face 747	Nozzle 1
Chinese characters	Face 746	Nozzle 2
	Face 746	Nozzle 1
	Face 746	Nozzle 2 (A3)
	Face 746	Nozzle 1 (A3)
Barcode	Face 740A 5/8	Nozzle 2
	Face 740A 5/8	Nozzle 1
QR codes	Face 740A 5/8	Nozzle 2
	Face 740A 5/8	Nozzle 1
	Face 741F 5/8	Nozzle 2
Data matrix	Face 741F 5/8	Nozzle 2
	Face 741F 5/8	Nozzle 1
	64 dpi**	Nozzle 2

\*\* This printing will be made with use of graphics data (dot pattern) but not with 2D code function, also the graphics data (dot pattern) should be prepared by the users. Result will vary depending on the print condition.

Nozzle size: 65µm; Font: 5x8; Ink type: 1067K



### Main unit / Printhead dimension



\*Main unit dimensions do not include any projections.

### Specification

Item	Model	
	UX-D860W/S	
Nozzle size	65µm	
Maximum number of print lines	Up to 8 lines	
Maximum number of print characters	Up to 1,000 characters (Depends on print lines)	
Font (Horizontal x Vertical)	4 x 5	✓
	5 x 5	✓
	5 x 7(8), 9 x 7(8)	✓
	7 x 10	✓
	11 x 11	✓ (Chinese only)
	10 x 12	✓
	12 x 16	✓
	18 x 24	✓
	24 x 32	✓
30 x 40	✓	
36 x 48	✓	
48 x 64	✓	
Character height	2 - 21 mm (Depends on print distance, print speed and operating temperature)	
Display & input device	WYSIWYG design Display: TFT LCD (10.4" color), backlight provided Input device: Touch panel, input sound provided	
Screen language (2 languages selectable)	English, Chinese, Korean, Thai, Vietnamese, German, French, Dutch, Italian, Spanish, Portuguese, Swedish, Danish, Greek, Russian, Czech, Polish, Arabic, Serbian, Turkish, Hungarian, Bulgarian, Catalan, Romanian, Finnish, Norwegian, Slovenian	
Maximum print rate	Up to 4,592 (Characters per second) (Font 5x5, space 1, 2 line)	
Standard characters	Alphanumeric (A-Z, a-z, 0-9), symbols (27) and space: Total 90	
User patterns	200 patterns each for dot matrix (50 patterns for 30x40, 36x48, 48x64 fonts)	
Print functions	Calendar, Count, Font mixture	
Barcode printing	code39, ITF, NW-7, EAN-13, EAN-8, UPC-A, UPC-E, code128/EAN-128, GS-1 DataBar	
2D code printing	Data Matrix (Alphabet: 49 characters/Numerals: 98 characters), QR code, Micro QR code	
Message storage capacity	Up to 2,000 messages (Depends on data content)	
Input signal	Print target detection, Printing stop, Rotary encoder pulse, Reciprocatve printing, Remote control (Run, Stop, High-voltage ON / OFF, Reset), (NPN / PNP Selectable)	
Output signal	Print in progress or Print complete, Online (NPN / PNP Selectable), Print ready, Fault, Warning (NPN Only)	
Data interface	RS-232C at baud rates selectable up to 115,200bps	
Ethernet (Modbus communication)	IEEE802.3, 100BASE-T	
External memory	USB for user data storage	
Printhead cable length / angle	4m (in-line/90 degrees)	
Operating temperature range	0-45°C (1067K Ink)	
Operating humidity range	30-90% RH (no condensation)	
Power supply (Automatic voltage selection)	AC100-120/220-240V±10% 50/60Hz 150VA	
Approval	CE, UL, cUL, RCM, FCC, ICES	
Dimensions (Width x Depth X Height)	400 x 395 x 527 mm	
International protection	IP55 (Printhead is excluded)	
Approximate weight	34kg	

**Hitachi Industrial Equipment Systems Co., Ltd.**



**Akshara Systems Pvt. Ltd**

101, Shiv Sai Complex, Balewadi, Pune, Maharashtra 411045

☎ 9512 200 200 ✉ info@aksharasystems.com

🌐 www.aksharasystem.com



JQA-QMA12087

Registration number: JQA-QMA12087

Registration date: April 1, 2005

The Marking Systems and Hoist Systems Division (Taga Division) of Hitachi Industrial Equipment Systems Co., Ltd. obtained international standard ISO 9001 certification for the quality assurance of the Ink Jet Printer contained in this brochure.